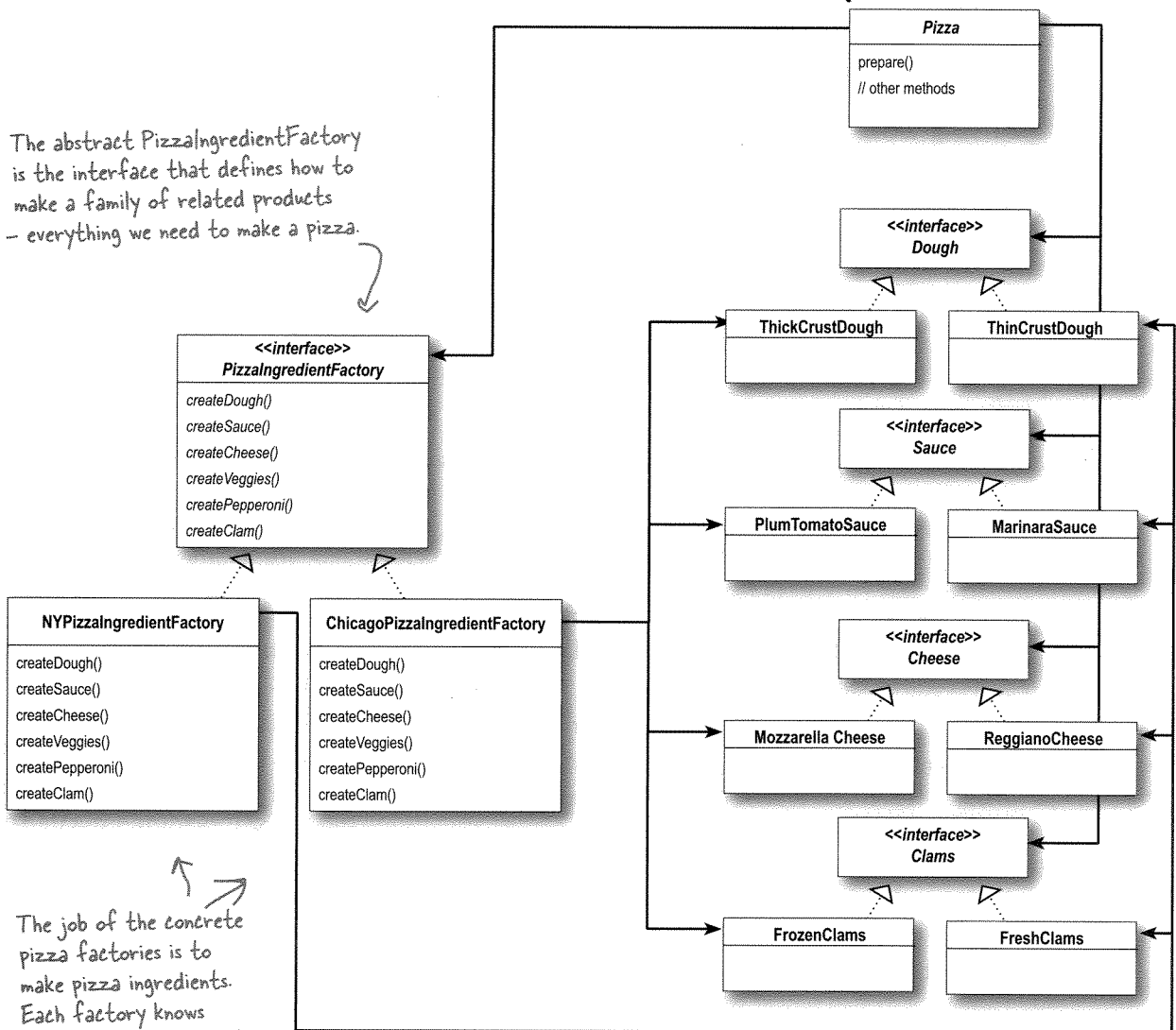


That's a fairly complicated class diagram; let's look at it all in terms of our PizzaStore:

The clients of the Abstract Factory are the concrete instances of the Pizza abstract class.

The abstract PizzalngredientFactory is the interface that defines how to make a family of related products - everything we need to make a pizza.



The job of the concrete pizza factories is to make pizza ingredients. Each factory knows how to create the right objects for their region.

Each factory produces a different implementation for the family of products.